

Iblok Series Monoflanges

Monoflange Series Iblok SB-DB-SBB-DBB valves are designed to replace conventional multiple-valve installations which are currently used for interfacing with pressure measuring systems.

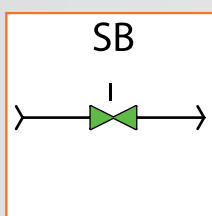
By combining various functions into a single valve body, various advantages are achieved including the reduction of installation costs, maintenance time, and additional supporting brackets. Further advantages include the reduction in the number of leak paths & overall mass which are considerably reduced, thus limiting the added stress from loading and vibration.

Monoflanges Series Iblok are available in a variety of materials.



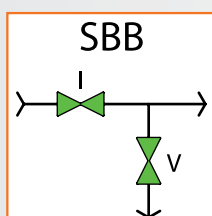
SB

Single isolate



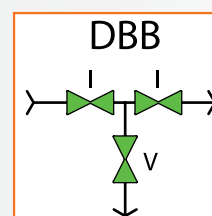
SBB

Single block & bleed



DBB

Double block & bleed



Monoflanges

Applications:

- Pressure instruments isolation and vent (gauges, switches, transmitters, etc.).
- Used as alternative to conventional manifold to permit a more compact installation, where presence of vibration is of concern.

Connections:

- Flanged to ANSI-ASME B16.5
- Threaded to ANSI-ASME B1.20.1, ISO 228 - ISO 7/1

Rating:

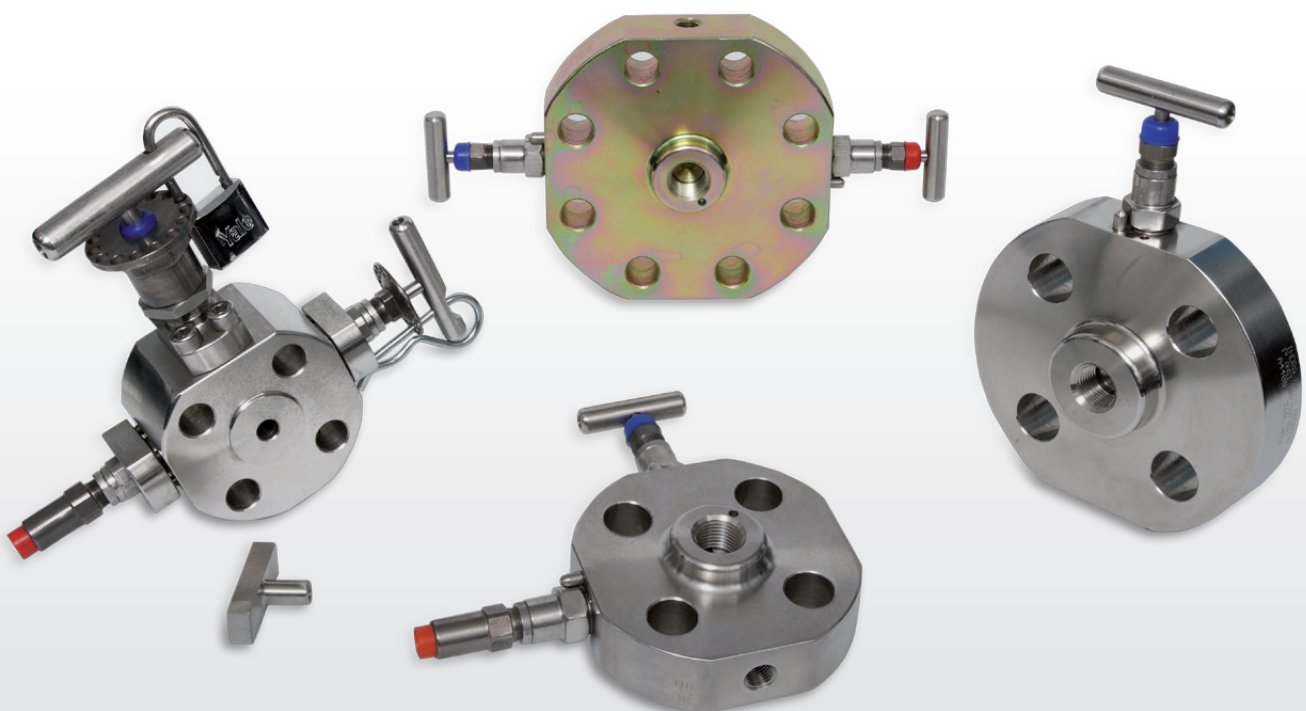
- To flange rating

Seals Standard:

- PTFE ($T \leq 200^{\circ} \text{C}$), Optional: Graphite ($T > 200^{\circ} \text{C}$)

Features:

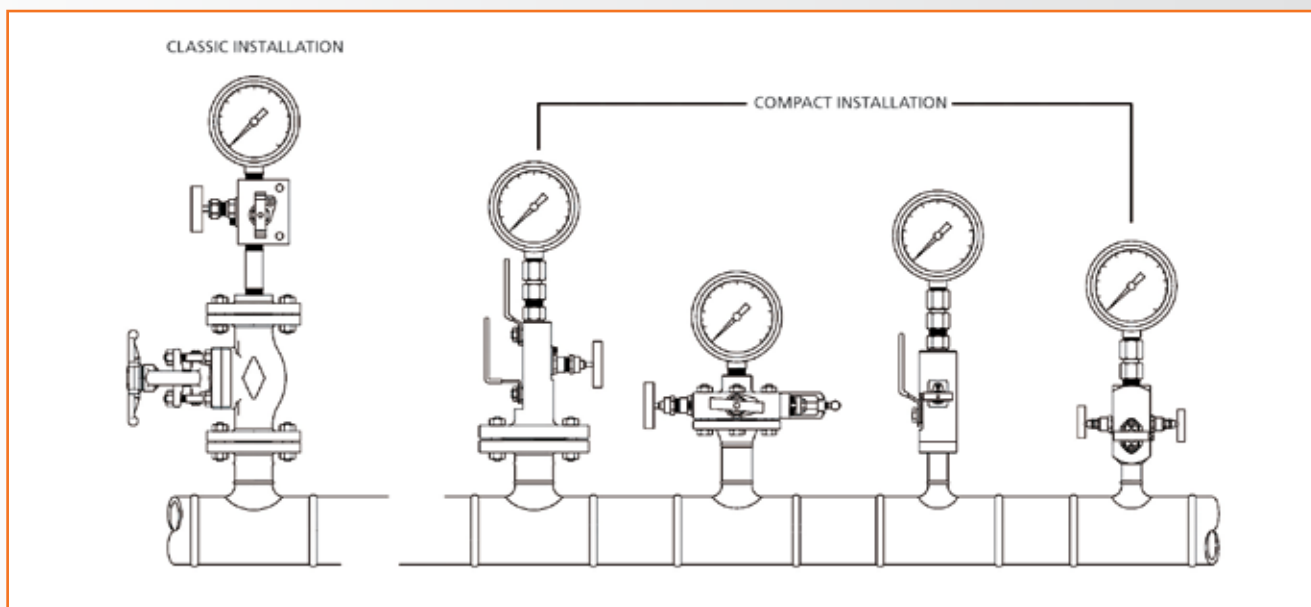
- Non rotating trim
- Bonnet locking pin
- Dust cup
- Easy operation



IBLOK series introduction:

Iblok Series Valves “SB-DB-SBB-DBB” are designed to combine in one compact and integral body for use as piping and instrumentation valves.

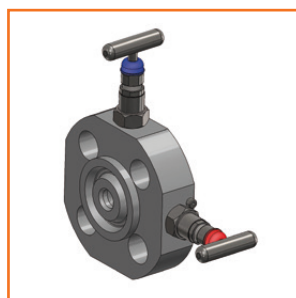
Iblok Series Valves, increase efficiency in process installation, & offer real world benefits when compared to traditional **Christmas Tree type** assemblies such as reduced installation and maintenance costs, reduced design weight & spatial requirements, reduced potential leaking points, and other problems amplified by the presence of vibration and associated installation stress.



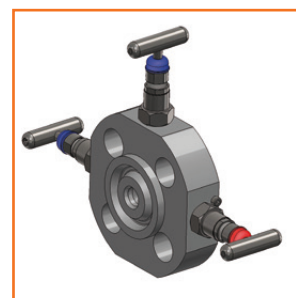
Monoflanges Types Flange/Thread



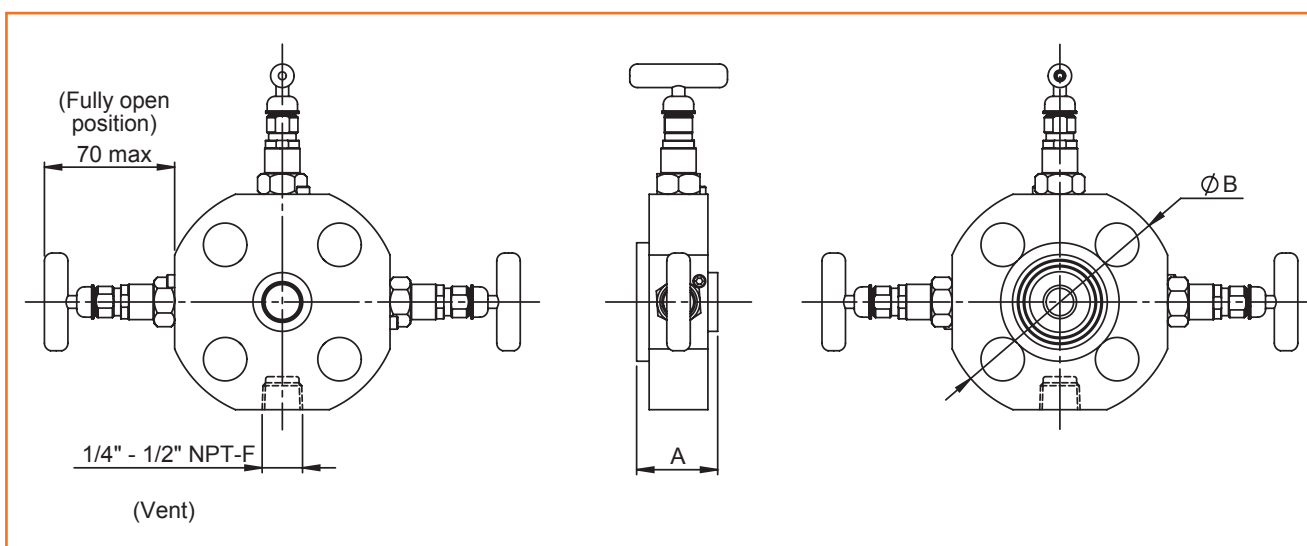
SB



SBB



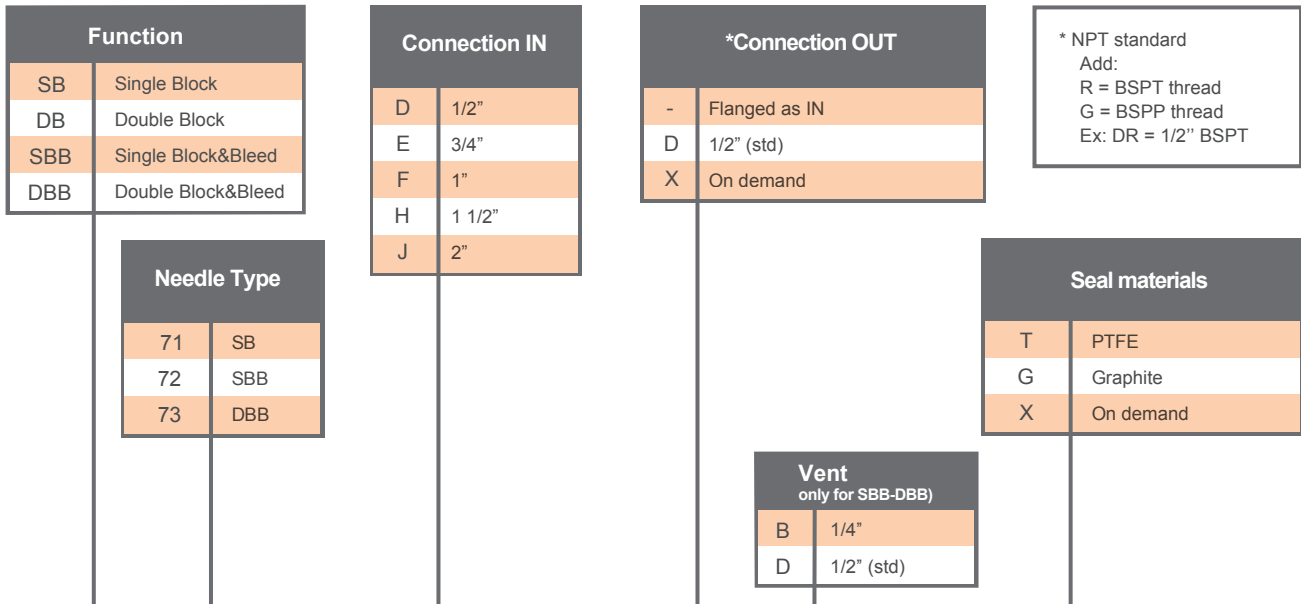
DBB



Flanged Inlet		Threaded Outlet	Dimensions			Weight	Flanged Inlet		Threaded Outlet	Dimensions			Weight
			A max (mm)		Ø B					A max (mm)		Ø B	
DN	Rating	NPT - F	RF	RTJ	(mm)	Kg	DN	Rating	NPT - F	RF	RTJ	(mm)	Kg
1/2"	150 *	1/2" std	44	-	90	2.0	1"	900-1500	1/2" std	49	49	150	5.0
1/2"	300	1/2" std	44	48	95	2.5	1"	2500	1/2" std	49	49	160	5.5
1/2"	600	1/2" std	49	48	95	2.5	1 1/2"	150	1/2" std	44	49	125	3.5
1/2"	900-1500	1/2" std	49	49	120	3.5	1 1/2"	300	1/2" std	44	49	155	5.0
1/2"	2500	1/2" std	49	49	135	4.0	1 1/2"	600	1/2" std	49	49	155	5.0
3/4"	150 *	1/2" std	44	-	100	2.5	1 1/2"	900-1500	1/2" std	49	49	180	6.5
3/4"	300	1/2" std	44	49	115	3.0	1 1/2"	2500	1/2" std	49	49	205	8.5
3/4"	600	1/2" std	49	49	115	3.0	2"	150	1/2" std	44	49	150	5.0
3/4"	900-1500	1/2" std	49	49	130	4.0	2"	300	1/2" std	44	49	165	5.5
3/4"	2500	1/2" std	49	49	140	4.5	2"	600	1/2" std	49	49	165	5.5
1"	150	1/2" std	44	49	110	3.0	2"	900-1500	1/2" std	49	49	215	9.5
1"	300	1/2" std	44	49	125	3.5	2"	2500	1/2" std	49	49	235	11.0
1"	600	1/2" std	49	49	125	3.5	*only RF version						

Dimensions and weight in table are for reference only and may be changed without notice

Ordering Information



DBB - 72 7 - D 150RF D D - L - G - * * *

Flange
150 RF
300 RF
600 RF
900/1500 RF
2500 RF
150 RJ
300 RJ
600 RJ
900/1500 RJ
2500 RJ

Connections
7
8

Materials
C
DLN
M400
F51
F53
F55
I625
I825
HC276
TN
LF2
X

See OPTIONS table

Options

-H	-L	-P						Availability			
								Needle Valves	Manifolds	Monoflanges	Ball Valves
A	Antitamper Actuator							✓	✓	✓	✓
B	Bolted Bonnet							✓		✓	✓
F	Oval Flange								✓		
G	Graphite seals							✓	✓	✓	✓
H	Rating 10.000 PSI (²)							✓	✓		
K1	Mechanical Electrical Contact										✓
K2	Magnetic Electrical Contact										✓
KG	Graphite bonnet seals replacement kit							✓	✓	✓	✓
KT	PTFE bonnet seals replacement kit							✓	✓	✓	✓
L	Locking Device							✓		✓	✓
O	Oxygen Service							✓	✓	✓	✓
P	Padlock							✓		✓	✓
Q	Quick Locking Device							✓	✓	✓	✓
R	Swivelling Fitting							✓		✓	✓
Y	Bonnet O.S.&Y.							✓		✓	✓
TV	Painting Treatment							✓	✓	✓	✓
TF	Phosphatization Treatment (¹)							✓	✓	✓	✓
TZ	Zinc Plating Treatment (¹)							✓	✓	✓	✓
U45-V	7/16" UNF L=45 mm screws and nuts kit (2 screws - 2 nuts) for 2 valves manifold								✓		
U75-2V	7/16" UNF L=75 mm screws and nuts kit (2 screws - 2 nuts) for 2 valves manifold								✓		
U45-3/5V	7/16" UNF L=45 mm screws and nuts kit (4 screws - 4 nuts) for 3 and 5 valves manifold								✓		
U75-3/5V	7/16" UNF L=75 mm screws and nuts kit (4 screws - 4 nuts) for 3 and 5 valves manifold								✓		
W	2" Pipe bracket								✓		
AT	Atex Version							✓	✓	✓	✓
GR	Gost R Version							✓	✓	✓	✓
FS	Fire Safe Version							✓	✓	✓	✓
TA	Fugitive Emission TA-LUFT Version							✓	✓	✓	✓
CRN	CURRENT CRN COMPLIANCE FOR 10 CANADIAN PROVINCES							✓	✓	✓	✓

(1) For carbon steel versions only.

(2) For flanged, BW, SW versions operating limits as for reference rules.

X = NOT CODED OPTION

For DB, SBB, DBB valves, repeat option code as many times as requested.
If you don't find options you need, please feel free to contact our sales Department
Ex: mod. 739R-DD-S-T-A-A-A = 2 Block + 1 Bleed bonnet Anti-tamper

Options

-H	-L	-P						Availability			
								Needle Valves	Manifolds	Monoflanges	Ball Valves
IDX	Vent Bottom Right								✓		
ISX	Vent Bottom Left								✓	✓	✓
M	Monel Trim							✓	✓	✓	✓
SPC 1	Special Marking - See descriptor							✓	✓	✓	✓
DIN 7756	Inlet Special Insert 1/8" NPT-M x DIN 7756 VG 8							✓	✓	✓	✓
2.0515 /DN15	Special DN15 marking requirement							✓	✓	✓	✓
3-G-GR -CUTR	GOST & CU-TR Certificate							✓	✓	✓	✓
X	Not Coded Option							✓	✓	✓	✓
?	?							✓	✓	✓	✓
?	?							✓	✓	✓	✓
?	?							✓	✓	✓	✓
?	?							✓	✓	✓	✓
?	?							✓	✓	✓	✓
?	?							✓	✓	✓	✓
?	?							✓	✓	✓	✓
?	?							✓	✓	✓	✓
?	?							✓	✓	✓	✓
?	?							✓	✓	✓	✓
?	?							✓	✓	✓	✓
?	?							✓	✓	✓	✓
?	?							✓	✓	✓	✓
?	?							✓	✓	✓	✓
?	?							✓	✓	✓	✓
?	?							✓	✓	✓	✓
?	?							✓	✓	✓	✓
?	?							✓	✓	✓	✓
?	?							✓	✓	✓	✓
?	?							✓	✓	✓	✓
?	?							✓	✓	✓	✓
?	?							✓	✓	✓	✓
?	?							✓	✓	✓	✓
?	?							✓	✓	✓	✓
?	?							✓	✓	✓	✓
?	?							✓	✓	✓	✓
?	?							✓	✓	✓	✓
?	?							✓	✓	✓	✓
?	?							✓	✓	✓	✓
?	?							✓	✓	✓	✓
?	?							✓	✓	✓	✓
?	?							✓	✓	✓	✓
?	?							✓	✓	✓	✓
?	?							✓	✓	✓	✓
?	?							✓	✓	✓	✓
?	?							✓	✓	✓	✓
?	?							✓	✓	✓	✓
?	?							✓	✓	✓	✓
?	?							✓	✓	✓	✓
?	?							✓	✓	✓	✓
?	?							✓	✓	✓	✓
?	?							✓	✓	✓	✓
?	?							✓	✓	✓	✓
?	?							✓	✓	✓	✓
?	?							✓	✓	✓	✓
?	?							✓	✓	✓	✓
?	?							✓	✓	✓	✓
?	?							✓	✓	✓	✓
?	?							✓	✓	✓	✓
?	?							✓	✓	✓	✓
?	?							✓	✓	✓	✓
?	?							✓	✓	✓	✓
?	?							✓	✓	✓	✓
?	?							✓	✓	✓	✓
?	?							✓	✓	✓	✓
?	?							✓	✓	✓	✓
?	?							✓	✓	✓	✓
?	?							✓	✓	✓	✓
?	?							✓	✓	✓	✓
?	?							✓	✓	✓	✓
?	?							✓	✓	✓	✓
?	?							✓	✓	✓	✓
?	?							✓	✓	✓	✓
?	?							✓	✓	✓	✓
?	?							✓	✓	✓	✓
?	?							✓	✓	✓	✓
?	?							✓	✓	✓	✓
?	?							✓	✓	✓	✓
?	?							✓	✓	✓	✓
?	?							✓	✓	✓	✓
?	?							✓	✓	✓	✓
?	?							✓	✓	✓	✓
?	?							✓	✓	✓	✓
?	?							✓	✓	✓	✓
?	?							✓	✓	✓	✓
?	?							✓	✓	✓	✓
?	?							✓	✓	✓	✓
?	?							✓	✓	✓	✓
?	?							✓	✓	✓	✓
?	?							✓	✓	✓	✓
?	?							✓	✓	✓	✓
?	?							✓	✓	✓	✓
?	?							✓	✓	✓	✓
?	?							✓	✓	✓	✓
?	?							✓	✓	✓	✓
?	?							✓	✓	✓	✓
?	?							✓	✓	✓	✓
?	?							✓	✓	✓	✓
?	?							✓	✓	✓	✓
?	?							✓	✓	✓	✓
?	?							✓	✓	✓	✓
?	?							✓	✓	✓	✓
?	?							✓	✓	✓	✓
?	?							✓	✓	✓	✓
?	?							✓	✓	✓	✓
?	?							✓	✓	✓	✓
?	?							✓	✓	✓	✓
?	?							✓	✓	✓	✓
?	?							✓	✓	✓	✓
?	?							✓	✓	✓	✓
?	?							✓	✓	✓	✓
?	?							✓	✓	✓	✓
?	?							✓	✓	✓	✓
?	?							✓	✓	✓	✓
?	?							✓	✓	✓	✓
?	?							✓	✓	✓	✓
?	?							✓	✓	✓	✓
?	?							✓	✓	✓	✓
?	?							✓	✓	✓	✓
?	?							✓	✓	✓	✓
?	?							✓	✓	✓	✓
?	?							✓	✓	✓	✓
?	?							✓	✓	✓	✓
?	?							✓	✓	✓	✓
?	?							✓	✓	✓	✓
?	?							✓	✓	✓	✓
?	?							✓	✓	✓	✓
?	?							✓	✓	✓	✓
?	?							✓	✓	✓	✓
?	?							✓	✓	✓	✓
?	?							✓	✓	✓	✓
?	?							✓	✓	✓	✓
?	?							✓	✓	✓	✓
?	?							✓	✓	✓	✓
?	?							✓	✓	✓	✓
?	?							✓	✓	✓	✓
?	?							✓	✓	✓	✓
?	?							✓	✓	✓	✓
?	?							✓	✓	✓	✓
?	?							✓	✓	✓	✓
?	?							✓	✓	✓	✓
?	?							✓	✓	✓	✓
?	?							✓	✓	✓	✓
?	?							✓	✓	✓	✓
?	?							✓	✓	✓	✓
?	?							✓	✓	✓	✓
?	?							✓	✓	✓	✓
?	?							✓	✓	✓	✓
?	?							✓	✓	✓	✓
?	?							✓	✓	✓	✓
?	?							✓	✓	✓	✓
?	?							✓	✓	✓	✓
?	?							✓	✓	✓	✓
?	?							✓	✓	✓	✓
?	?							✓	✓	✓	✓
?	?							✓	✓	✓	✓
?	?							✓	✓	✓	✓
?	?							✓	✓	✓	✓
?	?							✓	✓	✓	✓
?											

(1) For carbon steel versions only.

(2) For flanged, BW, SW versions operating limits as for reference rules.

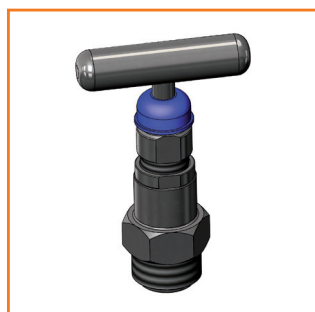
For DB, SBB, DBB valves, repeat option code as many times as requested.
 If you don't find options you need, please feel free to contact our sales Department
 Ex: mod. 739R-DD-S-T-A-A-A = 2 Block + 1 Bleed bonnet Anti-tamper

Available Bonnet Styles

S.S. Dust Cap Bonnet



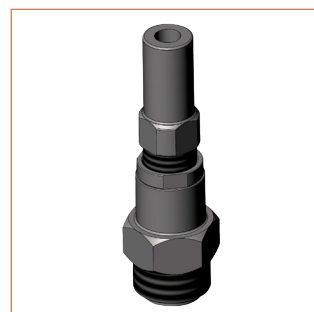
Original Bonnet



Bolted Bonnet



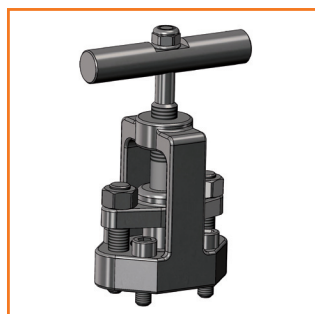
Anti-Tamper Bonnet



O.S.&Y. Bonnet
with locking device



O.S.&Y. Bonnet

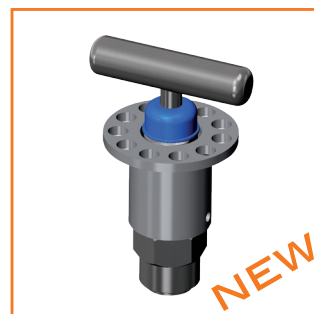


O.S.&Y. Bonnet



NEW

Standard Bonnet with
locking device



NEW